

# Contours Quick® Elite

---

## CARRIOLA LIGERO



Escanee para ver el video instructivo

Modelo # ZL047  
S152-R5 11/2023

# ⚠️ ADVERTENCIA

Failure to follow these warnings and the assembly instructions could result in serious injury or death. **Avoid serious injury from falling or sliding out. Always use restraint system.** Your child's safety depends on you. Proper stroller use cannot be assured unless you follow these instructions. DO NOT USE STROLLER UNTIL YOU READ AND UNDERSTAND THESE INSTRUCTIONS. KEEP INSTRUCTIONS FOR FUTURE USE.

## IMPORTANT SAFETY INFORMATION:

### How to Keep Your Child Safe While Using this Stroller

- **Adult assembly required.**
- **Never leave your child unattended while in stroller.** Accidents can happen quickly while your back is turned. You must always keep your child in view while your child is in the stroller, even when sleeping. Do not use this product as a bed. Your child may become tangled in straps or pads and suffocate.
- **Always use restraint system to keep child from standing up or falling out of the stroller.**
- **Always lock the stroller open before allowing your child in or near the stroller. This prevents injuries caused by stroller collapsing.**
- Only use this stroller with children who weigh no more than 50 lb (22.7 kg). Use by larger children may damage the stroller or cause a hazardous, unstable condition to exist.
- **Always set the wheel brakes when stroller is not moving, especially on an incline.** This prevents the stroller from rolling away.

### What to Avoid While Using this Stroller

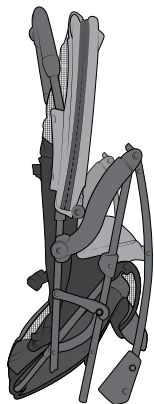
- **Always balance the weight of the stroller evenly.** To prevent the stroller from becoming unstable, do not place parcels or accessory items on the stroller canopy, seat, or over the handle. Do not allow children to play with or hang onto the stroller.
- **Never use this stroller on stairways or escalators.**
- **This is not an exercise stroller!** Do not use this product while running, jogging, in-line skating, or participating in other athletic activities.
- **Take care when folding and unfolding to prevent finger pinching.**
- **Make sure children are clear of any moving parts** if you adjust the stroller; otherwise, they may be injured.
- **DO NOT** allow children to climb into stroller unassisted. Stroller may tip over and injure child.
- Only use replacement parts and accessories supplied by the manufacturer.
- **DO NOT put child in basket.**
- To prevent the stroller from becoming unstable or tipping, do not put more than 10 lb (4.54 kg) in the basket.
- Product may become unstable if a storage bag other than the one recommended by the manufacturer is used.

## WARNING

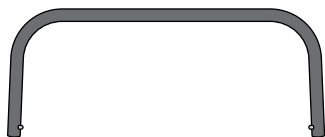
### How to Use this Stroller with Your infant car seat

- Use only compatible car seats with this stroller. For a list of compatible car seats, please view product information at [ContoursBaby.com](http://ContoursBaby.com).
- For correct use with compatible infant car seats, refer to page 13 of instructions.
- If at any time your infant car seat does not secure properly to the stroller, or if you have questions about assembly or use of the stroller, **DO NOT** use this product. Call Contours at 1-888-226-4469.
- **Only transport infants that are within the size and weight limitations of your infant car seat, as described in the instruction manual provided by the infant car seat manufacturer.**
- When using this product, to avoid serious injury from falling or sliding out, infant must always be secured in the Infant Car Seat with the Car Seat harness. Refer to Infant Car Seat Instructions for proper adjustment.
- ALWAYS place straps on car seat near leg side of handle. Never place near head side of handle.
- DO NOT place car seat in stroller without using stroller car seat straps.
- When installing and removing the car seat, please keep a hand on the infant car seat carrier arm while adjusting or unbuckling the car seat strap. Car seat may have moved while in use.
- **Make sure the stroller seat is fully reclined to ensure infant car seat is secure before placing your infant car seat in stroller.**
- ALWAYS place the car seat facing the care giver.
- Remove napper bar/tray from stroller prior to assembling the car seat. Car seats are not intended to be used with the napper bar/tray assembled on the stroller.

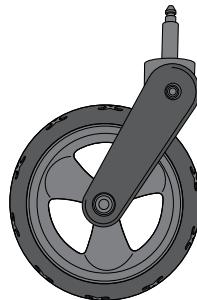
## LISTA DE PIEZAS



Bastidor del carrito con  
cesta



Tubo de cesta



Ruedas delanteras (2)



Conjunto de freno



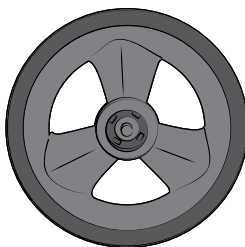
Arandelas(4)



Pasadores de  
chaveta (2)



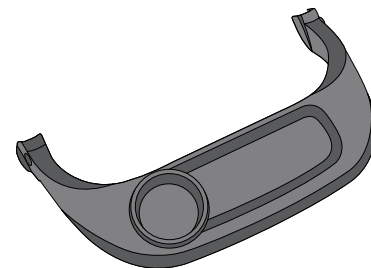
Tapacubos (2)



Ruedas traseras (2)



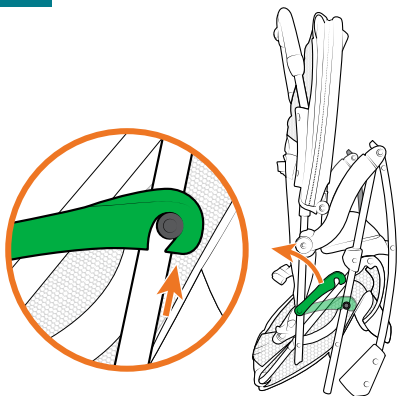
Posavasos



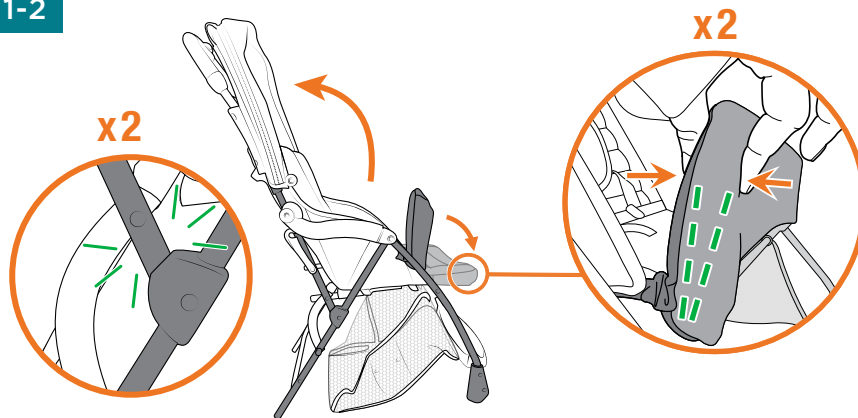
Bandeja infantil

## APLICAR LOS FRENOS

1-1

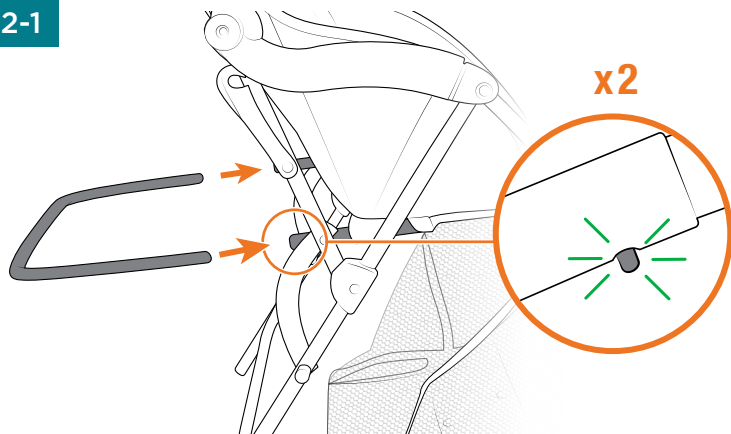


1-2

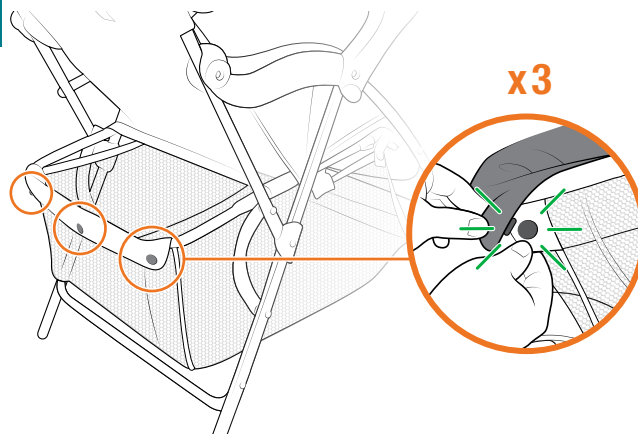


## ADJUNTAR CESTA

2-1

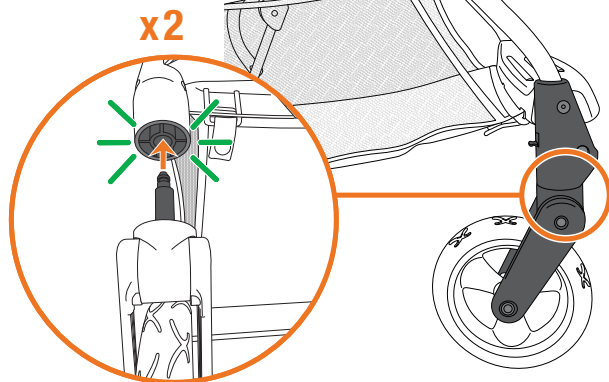


2-2

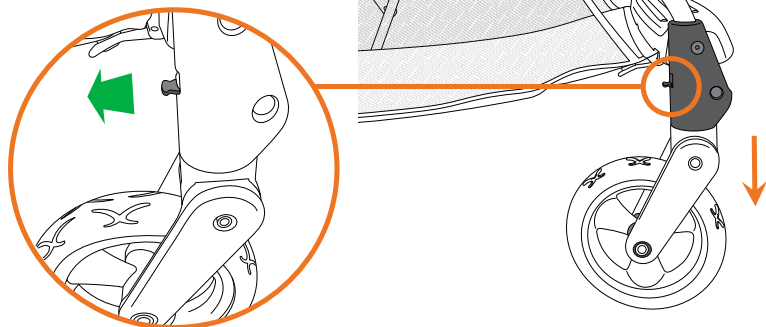


## FIJAR LAS RUEDAS DELANTERAS

3-1

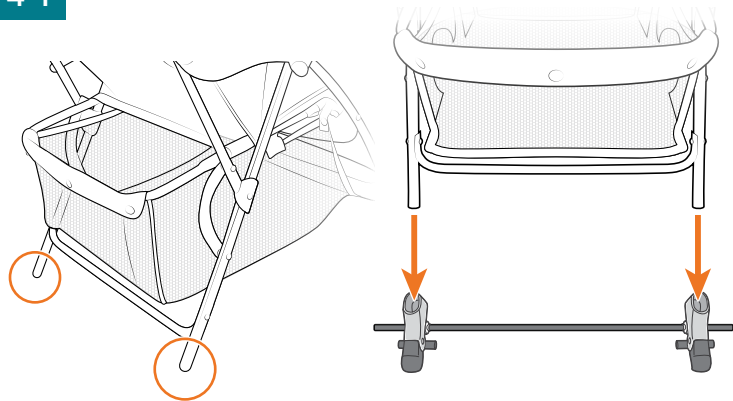


PARA ELIMINAR

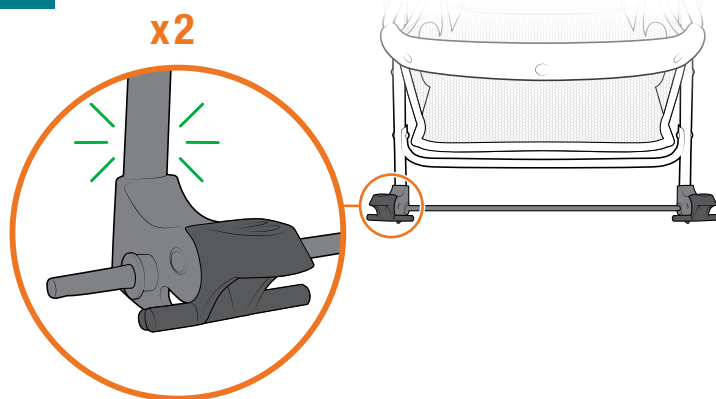


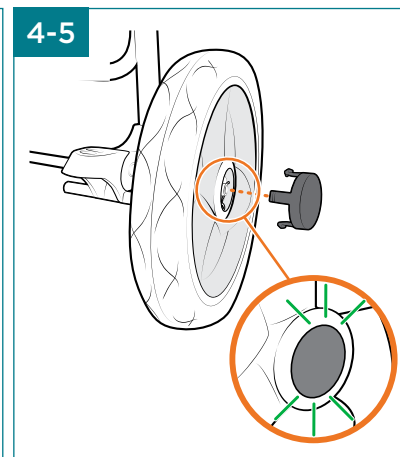
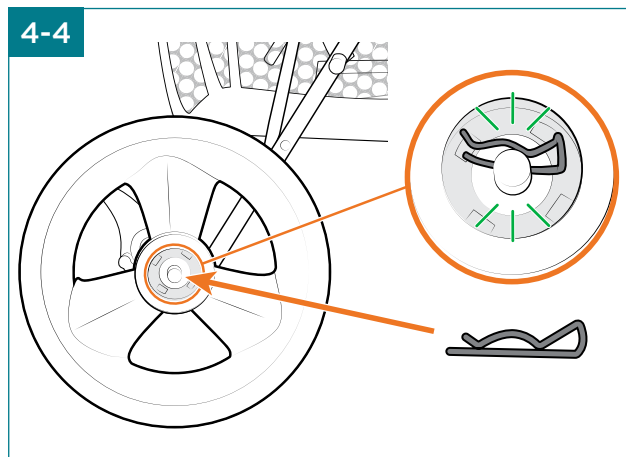
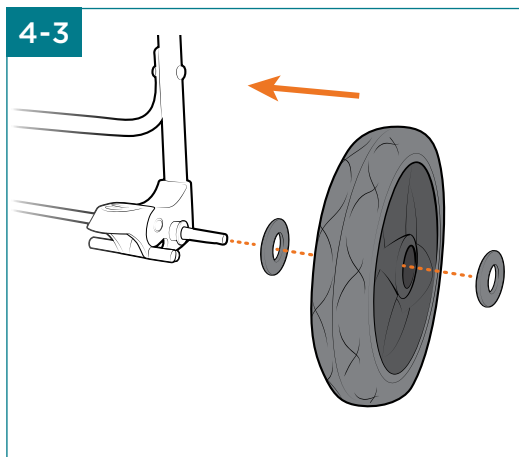
## FIJAR LAS RUEDAS TRASERAS

4-1

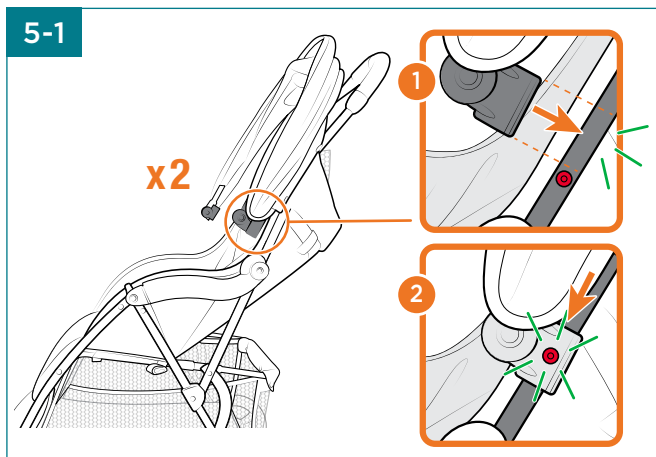


4-2

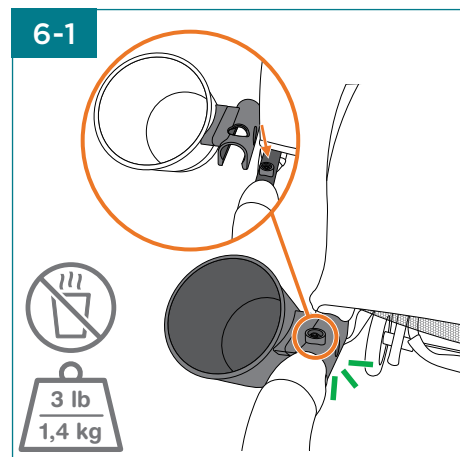




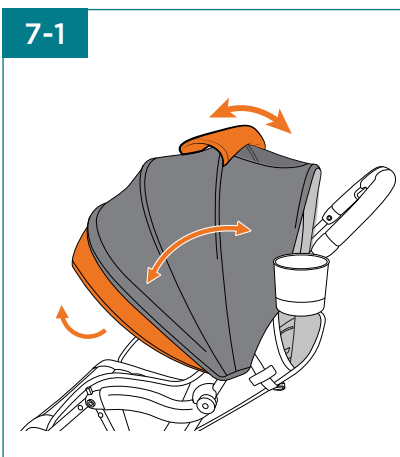
## FIJAR LA CAPOTA



## ADJUNTAR PORTAVASOS

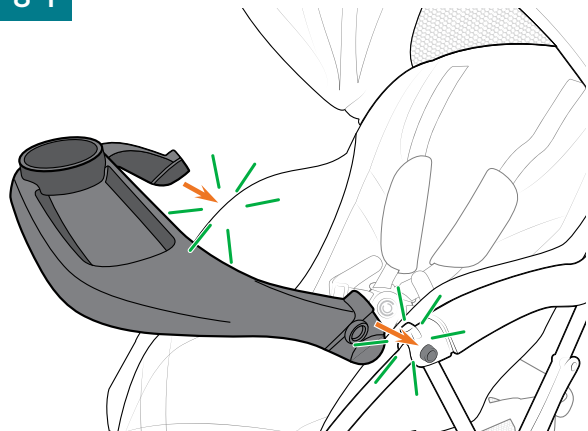


## AJUSTAR EL CAPOTA

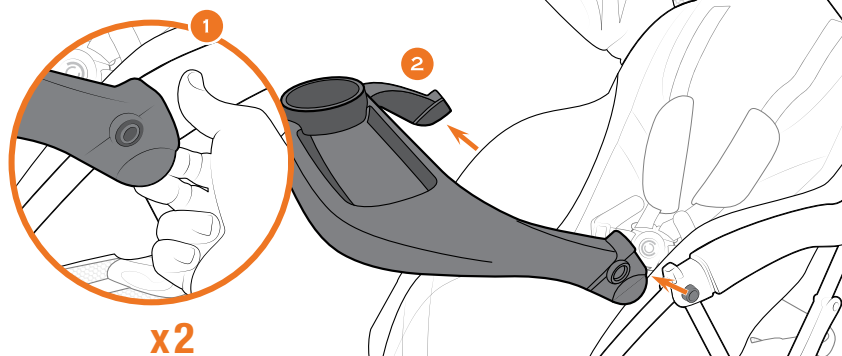


## ADJUNTAR BANDEJA PARA NIÑOS

8-1

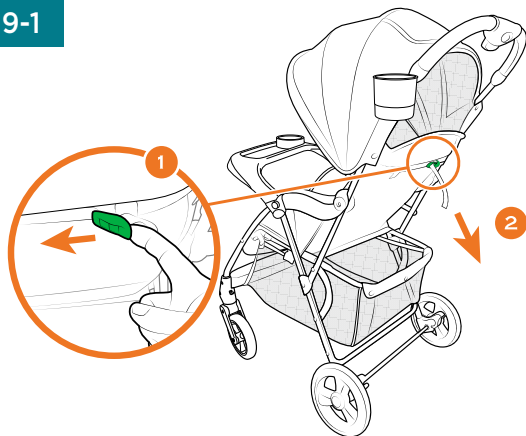


PARA ELIMINAR



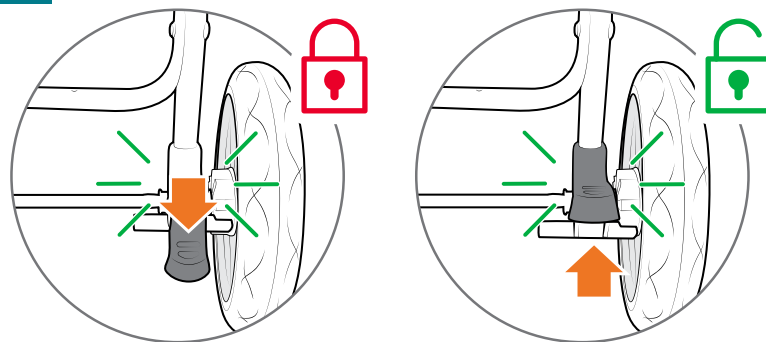
## RECLINAR EL ASIENTO

9-1



## APLICAR LOS FRENOS

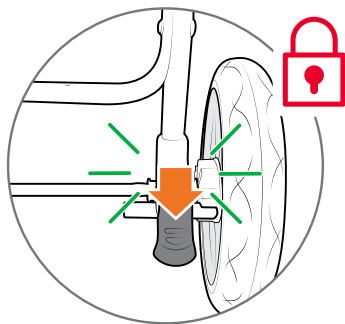
10-1



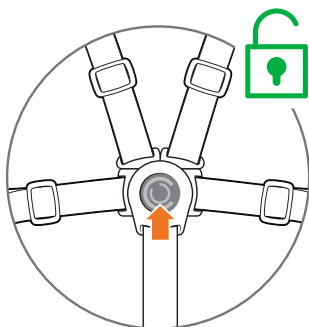


## SUJETAR EL NIÑO AL ASIENTO

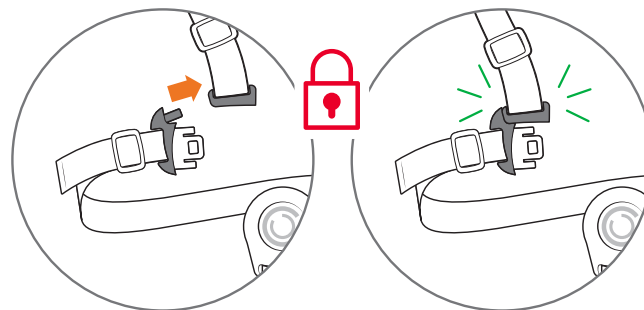
11-1



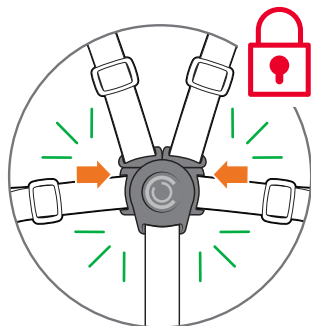
11-2



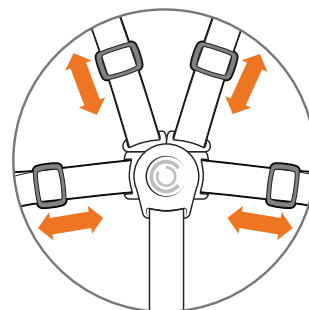
11-3



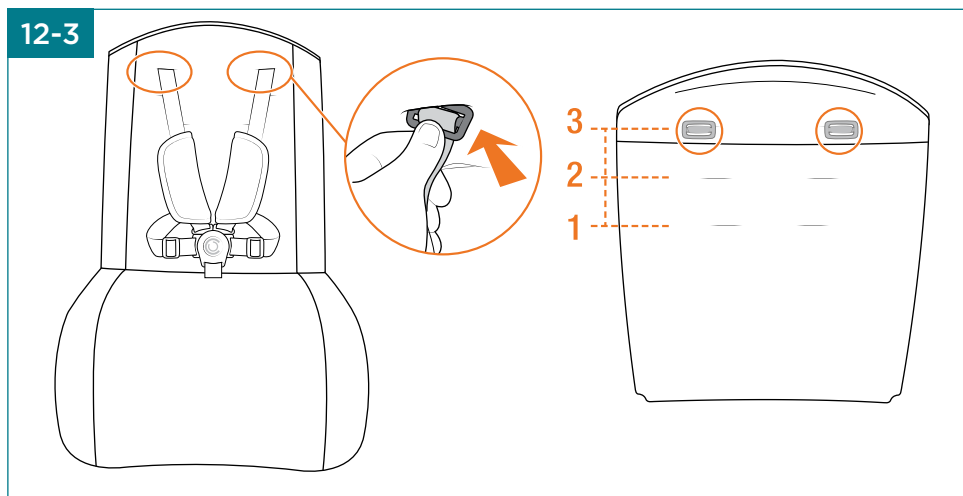
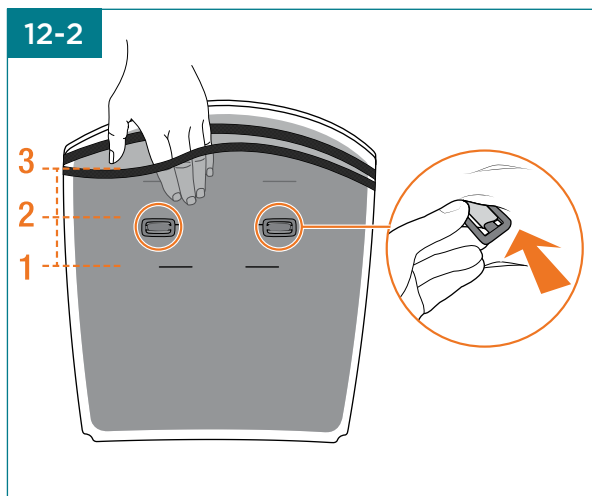
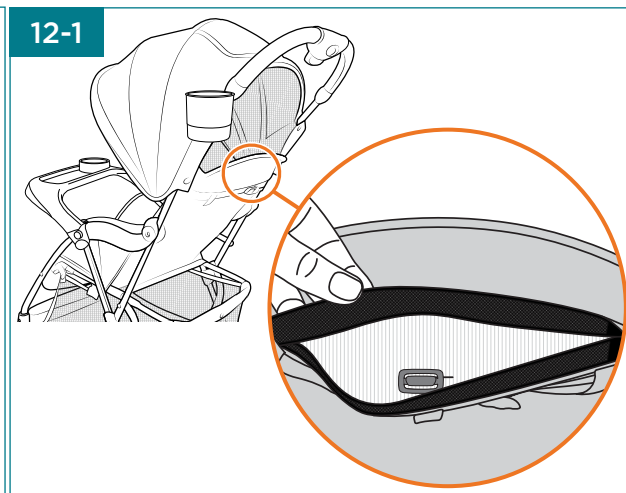
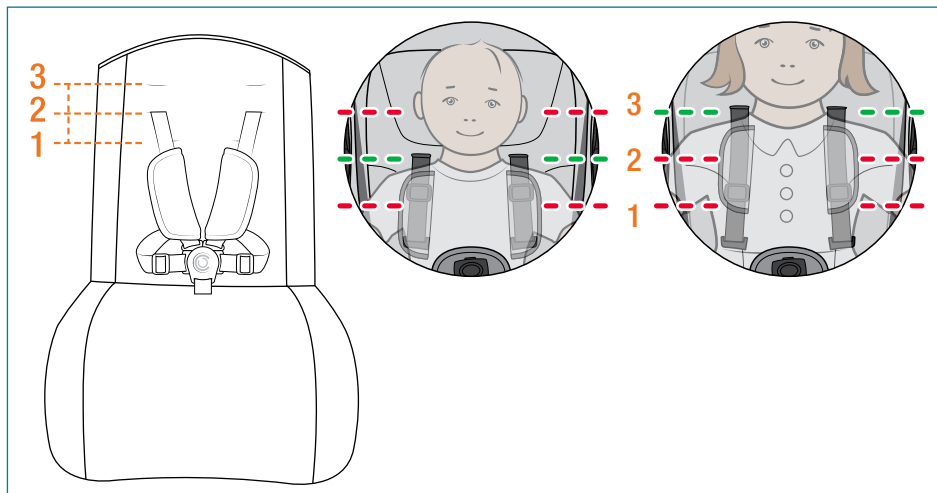
11-4



11-5



## AJUSTAR LA ALTURA DE LA CORREA PARA EL HOMBRO

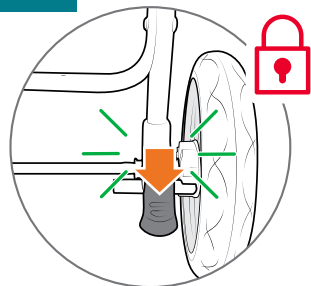


## INSTALAR ASIENTO INFANTIL PARA AUTOMÓVIL

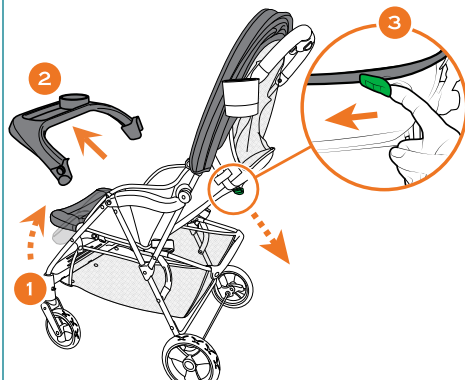


Escanee para ver el video instructivo

13-1

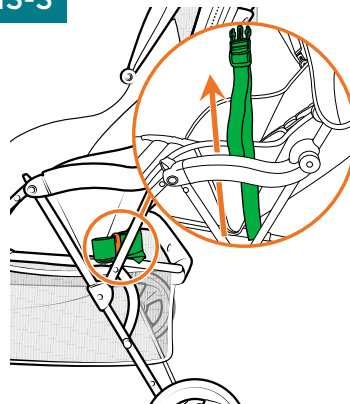


13-2



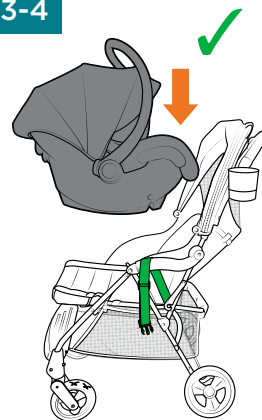
Levante el reposapiernas, retire la bandeja y recline el asiento.

13-3

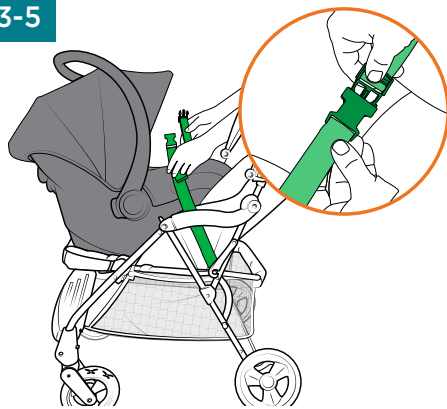


Correa de alimentación debajo del reposabrazos.

13-4



13-5



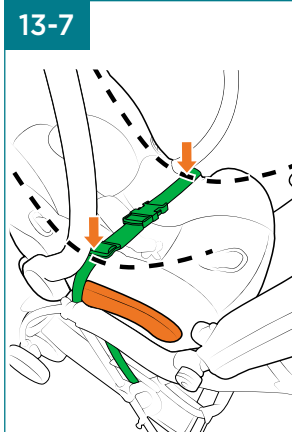
Ajuste el cinturón hasta que las hebillas casi se toquen. Tire de la lengüeta del extremo del cinturón de seguridad para fijarlo.

13-6



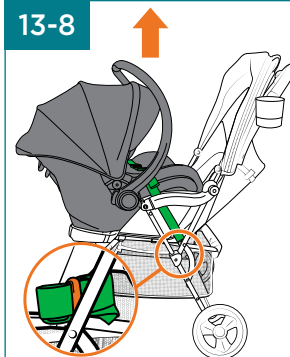
Junte las hebillas para asegurarlas.

13-7



Punto central más bajo

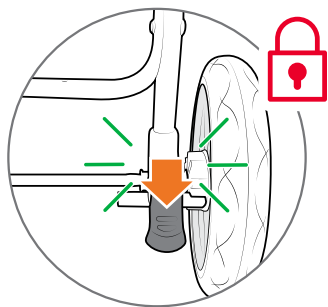
13-8



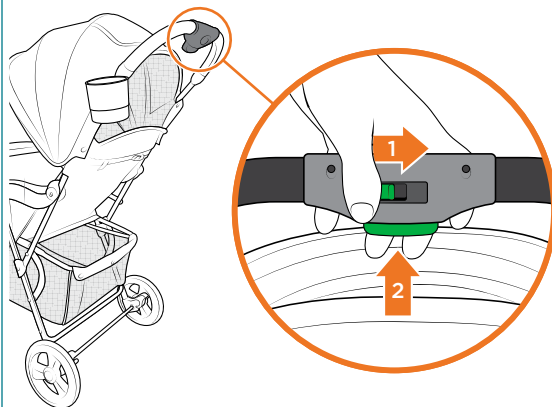
Guarde las correas del asiento infantil para automóvil cuando no esté en uso.

## PLEGAR LA SILLA

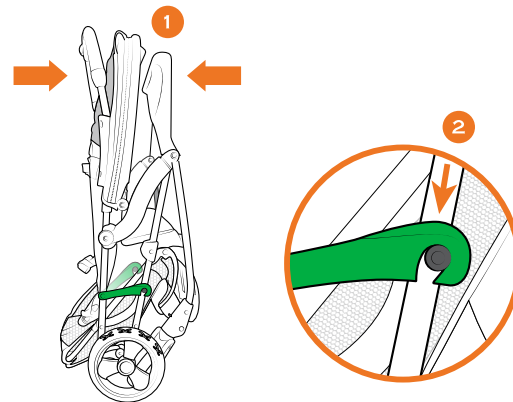
14-1



14-2



14-3



## CUIDADO Y MANTENIMIENTO

- Limpie las piezas metálicas con un paño húmedo y séquelas.
- Limpie la tela con agua y jabón suave.
- Si el cochecito se moja, pase un paño suave para evitar que el bastidor metálico se oxide.
- Cuando guarde el cochecito, no coloque nunca otros artículos encima o dentro de él, ya que podría dañarlo.
- Compruebe periódicamente si hay piezas desgastadas, tornillos flojos y materiales o costuras deteriorados.
- Sustituya inmediatamente las piezas dañadas.

Contours® - United States  
1100 W Monroe St  
Chicago, IL 60607

1-888-226-4469  
[customerservice@contoursbaby.com](mailto:customerservice@contoursbaby.com)